

Figure 15
Rail Analysis



CARTERET COUNTY
 CTP Analysis and Information

Carteret County

Rail Features

- Fixed Guideway
- Amtrak / Freight Route
- Current Railroad
- Amtrak Station
- Intermodal Terminal

Rail Analysis Features

- Airport
- Seaport
- Destination
- Rail Crossing - At Grade
- Rail Crossing - Over
- Rail Crossing - Under
- Military Installation
- Study Road
- MPO Boundary
- RPO Boundary



Base map date: October 02, 2019

Legal Disclaimer

This product contains mapping data for informational and planning purposes only, and is subject to change. Users should review or consult the primary data sources to ascertain the usability of the information.

Plan Date: April 13, 2026

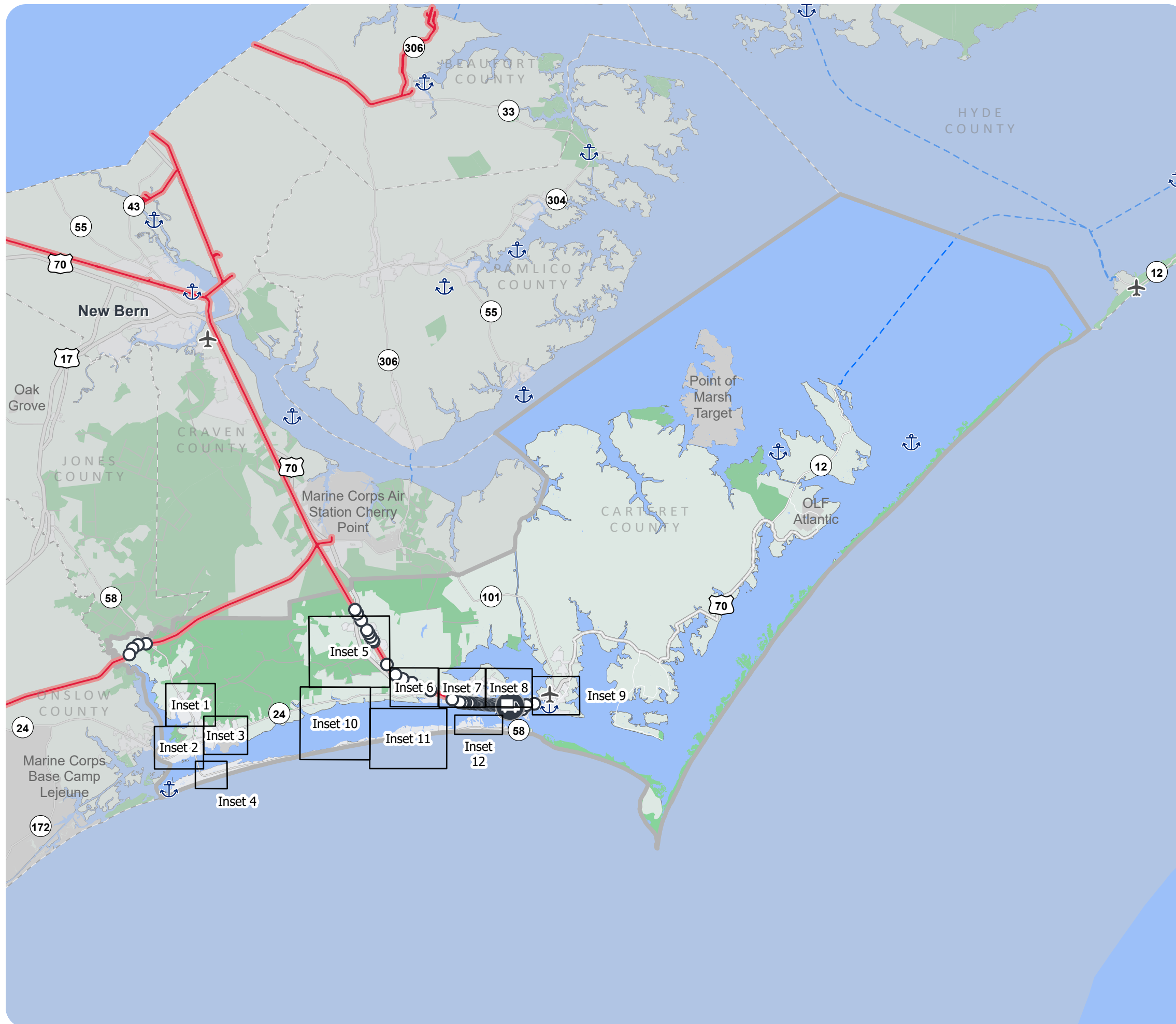


Figure 15
Rail Analysis



CARTERET COUNTY

CTP Analysis and Information
 Inset 1
 Peletier

Rail Features

- Fixed Guideway
- Amtrak / Freight Route
- Current Railroad
- Amtrak Station
- Intermodal Terminal

Rail Analysis Features

- Airport
- Seaport
- Destination
- Rail Crossing - At Grade
- Rail Crossing - Over
- Rail Crossing - Under
- Military Installation
- Study Road
- MPO Boundary
- RPO Boundary



Base map date: October 02, 2019

Legal Disclaimer

This product contains mapping data for informational and planning purposes only, and is subject to change. Users should review or consult the primary data sources to ascertain the usability of the information.

Plan Date: April 13, 2026

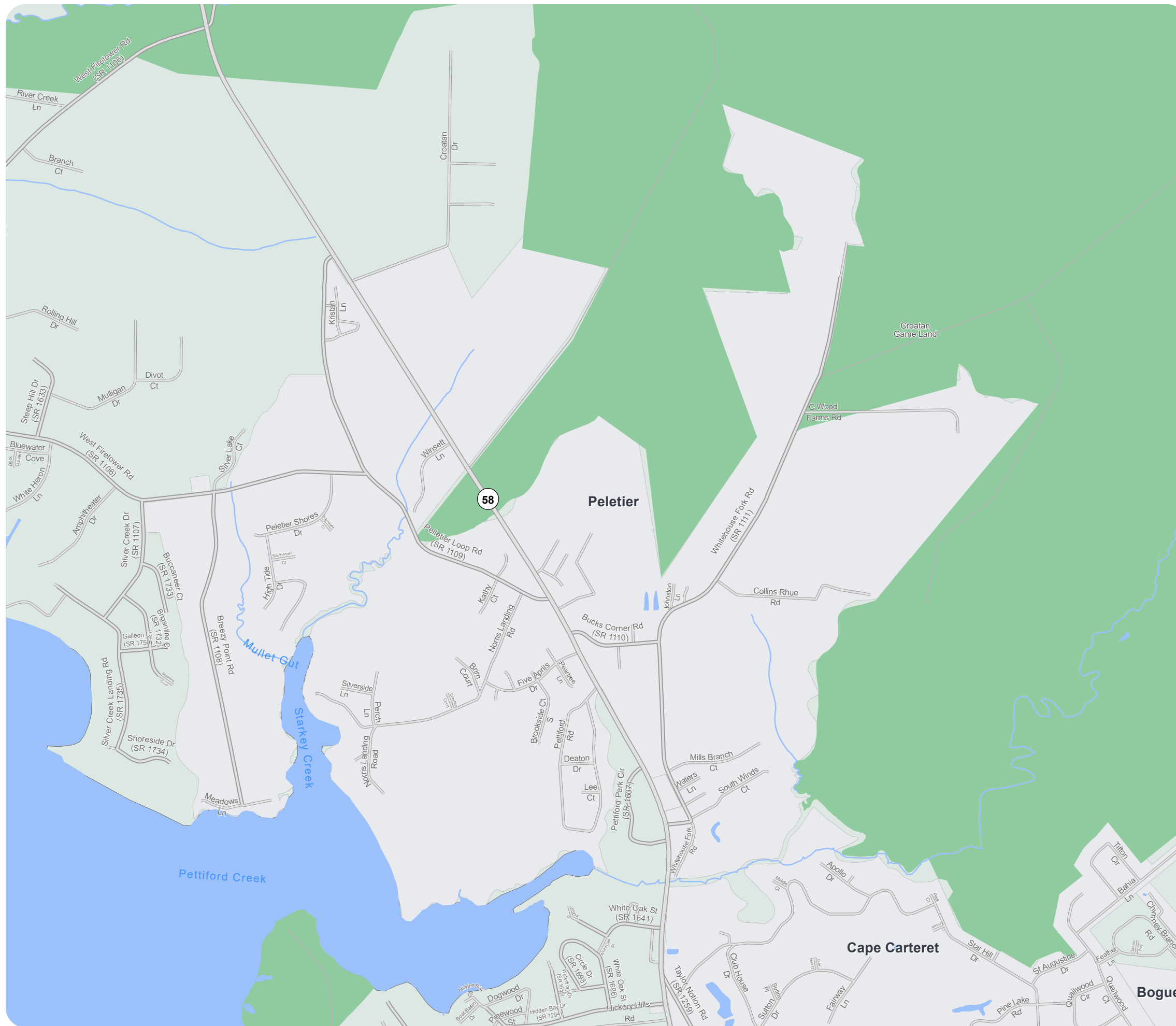




Figure 15
Rail Analysis



CARTERET COUNTY
 CTP Analysis and Information
 Inset 2
 Cedar Point and Cape Carteret

- Rail Features**
- Fixed Guideway
 - Amtrak / Freight Route
 - Current Railroad
 - Amtrak Station
 - Intermodal Terminal
- Rail Analysis Features**
- Airport
 - Seaport
 - Destination
 - Rail Crossing - At Grade
 - Rail Crossing - Over
 - Rail Crossing - Under
 - Military Installation
 - Study Road
 - MPO Boundary
 - RPO Boundary



Base map date: October 02, 2019

Legal Disclaimer

This product contains mapping data for informational and planning purposes only, and is subject to change. Users should review or consult the primary data sources to ascertain the usability of the information.

Plan Date: April 13, 2026



Figure 15
Rail Analysis



CARTERET COUNTY
 CTP Analysis and Information
 Inset 3
 Bogue

Rail Features

- Fixed Guideway
- Amtrak / Freight Route
- Current Railroad
- Amtrak Station
- Intermodal Terminal

Rail Analysis Features

- Airport
- Seaport
- Destination
- Rail Crossing - At Grade
- Rail Crossing - Over
- Rail Crossing - Under
- Military Installation
- Study Road
- MPO Boundary
- RPO Boundary



Base map date: October 02, 2019

Legal Disclaimer

This product contains mapping data for informational and planning purposes only, and is subject to change. Users should review or consult the primary data sources to ascertain the usability of the information.

Plan Date: April 13, 2026

Figure 15
Rail Analysis



CARTERET COUNTY

CTP Analysis and Information
 Inset 4
 Emerald Isle

Rail Features

- Fixed Guideway
- Amtrak / Freight Route
- Current Railroad
- Amtrak Station
- Intermodal Terminal

Rail Analysis Features

- Airport
- Seaport
- Destination
- Rail Crossing - At Grade
- Rail Crossing - Over
- Rail Crossing - Under
- Military Installation
- Study Road
- MPO Boundary
- RPO Boundary



Base map date: October 02, 2019

Legal Disclaimer

This product contains mapping data for informational and planning purposes only, and is subject to change. Users should review or consult the primary data sources to ascertain the usability of the information.

Plan Date: April 13, 2026



Figure 15
Rail Analysis



CARTERET COUNTY

CTP Analysis and Information
 Inset 5
 Newport

Rail Features

- Fixed Guideway
- Amtrak / Freight Route
- Current Railroad
- Amtrak Station
- Intermodal Terminal

Rail Analysis Features

- Airport
- Seaport
- Destination
- Rail Crossing - At Grade
- Rail Crossing - Over
- Rail Crossing - Under
- Military Installation
- Study Road
- MPO Boundary
- RPO Boundary



Base map date: October 02, 2019

Legal Disclaimer

This product contains mapping data for informational and planning purposes only, and is subject to change. Users should review or consult the primary data sources to ascertain the usability of the information.

Plan Date: April 13, 2026

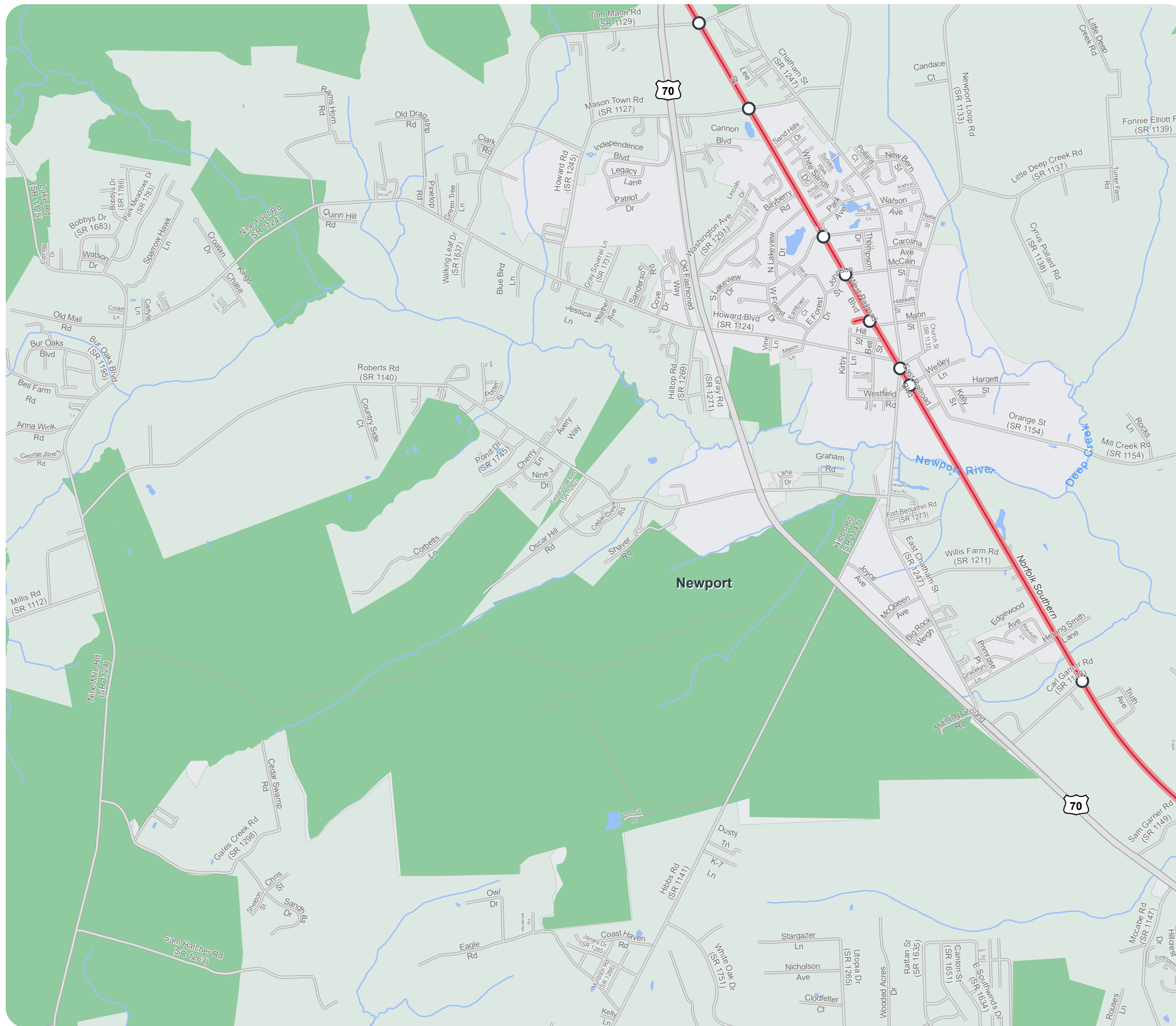


Figure 15
Rail Analysis



CARTERET COUNTY

CTP Analysis and Information
 Inset 6
 Morehead City 1

Rail Features

- Fixed Guideway
- Amtrak / Freight Route
- Current Railroad
- Amtrak Station
- Intermodal Terminal

Rail Analysis Features

- Airport
- Seaport
- Destination
- Rail Crossing - At Grade
- Rail Crossing - Over
- Rail Crossing - Under
- Military Installation
- Study Road
- MPO Boundary
- RPO Boundary

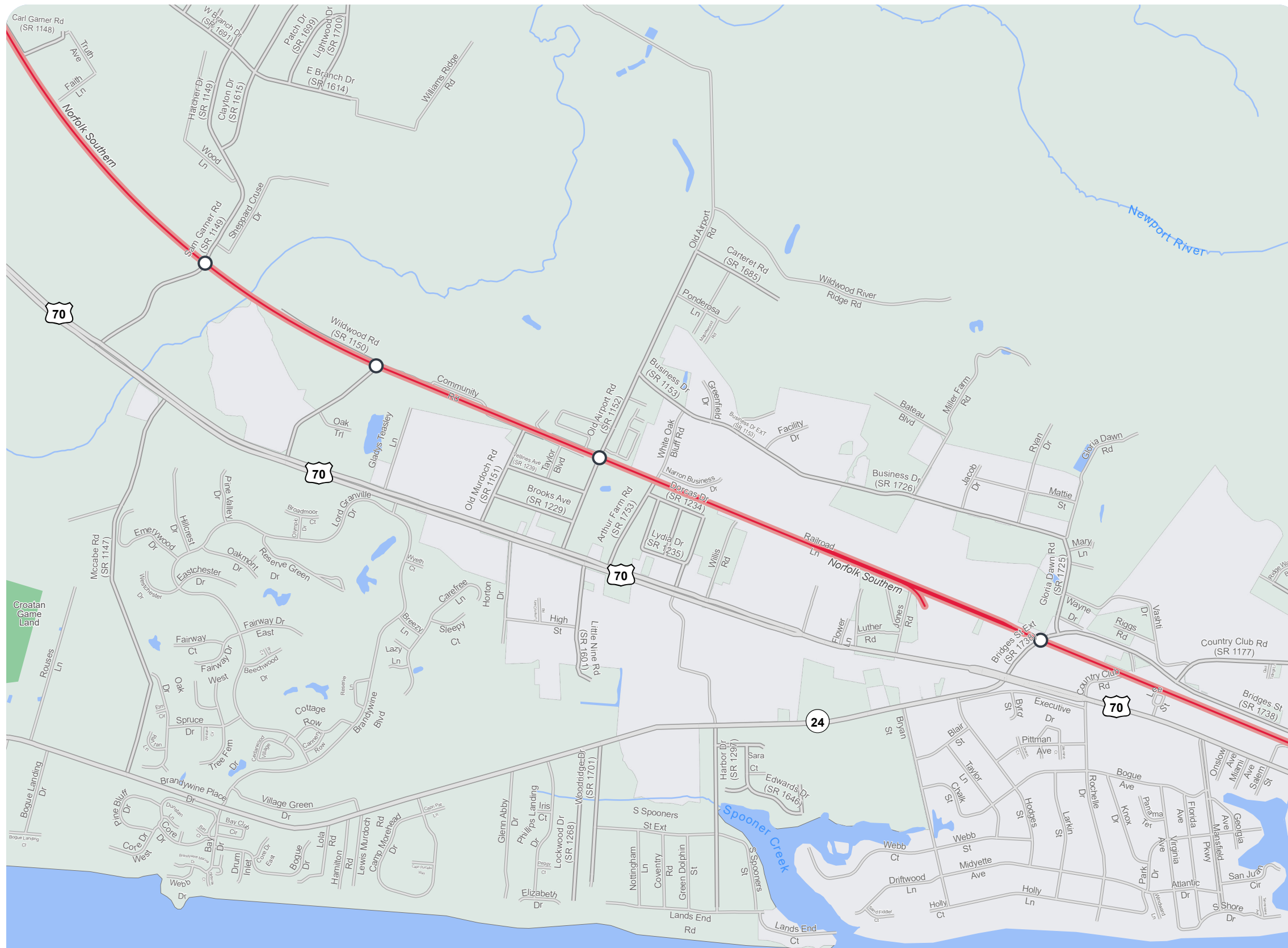


Base map date: October 02, 2019

Legal Disclaimer

This product contains mapping data for informational and planning purposes only, and is subject to change. Users should review or consult the primary data sources to ascertain the usability of the information.

Plan Date: April 13, 2026



Morehead City

Figure 15
Rail Analysis



CARTERET COUNTY

CTP Analysis and Information
 Inset 7
 Morehead City 2

Rail Features

- Fixed Guideway
- Amtrak / Freight Route
- Current Railroad
- Amtrak Station
- Intermodal Terminal

Rail Analysis Features

- Airport
- Seaport
- Destination
- Rail Crossing - At Grade
- Rail Crossing - Over
- Rail Crossing - Under
- Military Installation
- Study Road
- MPO Boundary
- RPO Boundary



Base map date: October 02, 2019

Legal Disclaimer

This product contains mapping data for informational and planning purposes only, and is subject to change. Users should review or consult the primary data sources to ascertain the usability of the information.

Plan Date: April 13, 2026

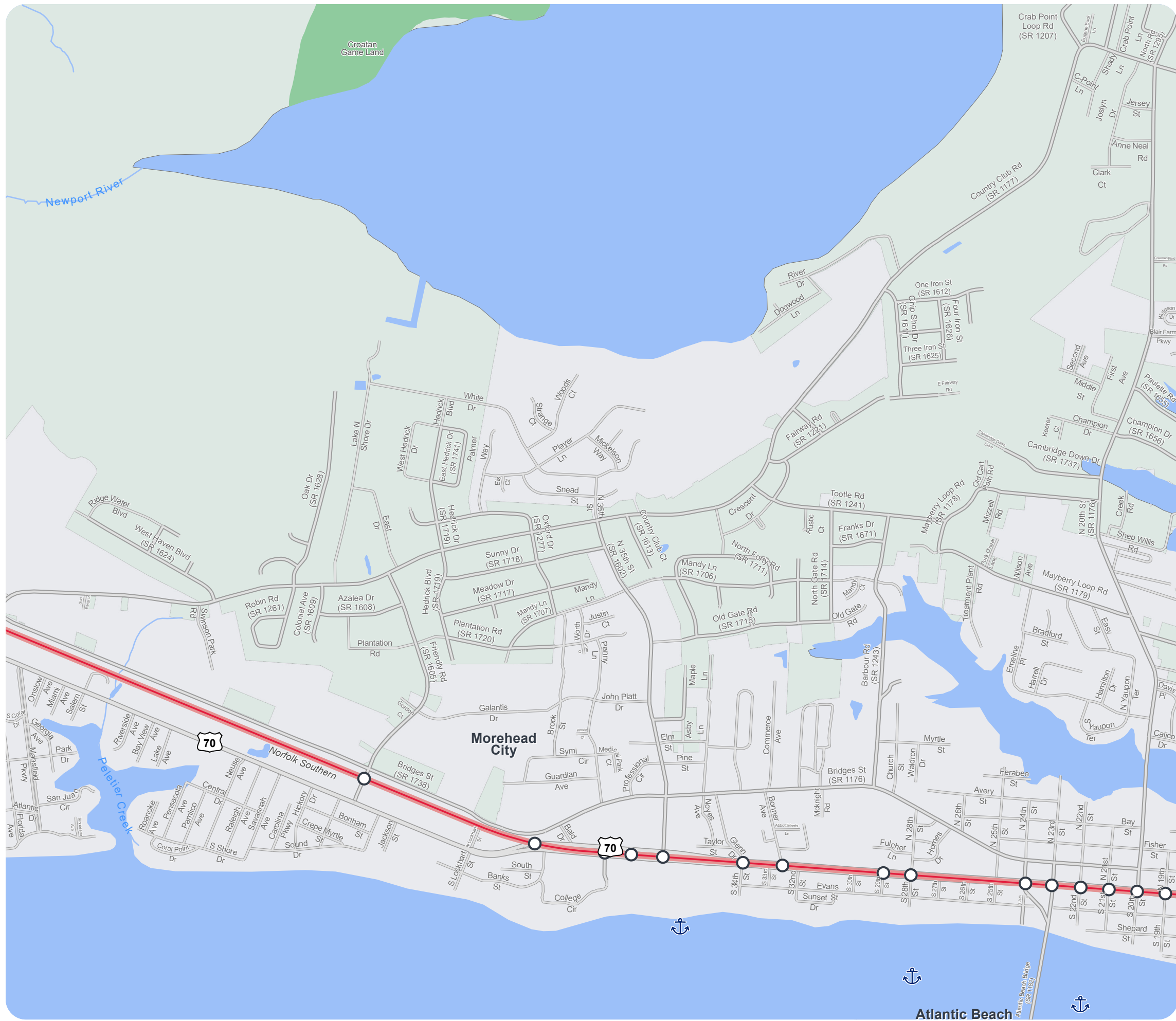


Figure 15
Rail Analysis



CARTERET COUNTY

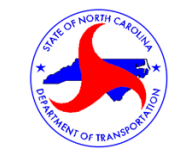
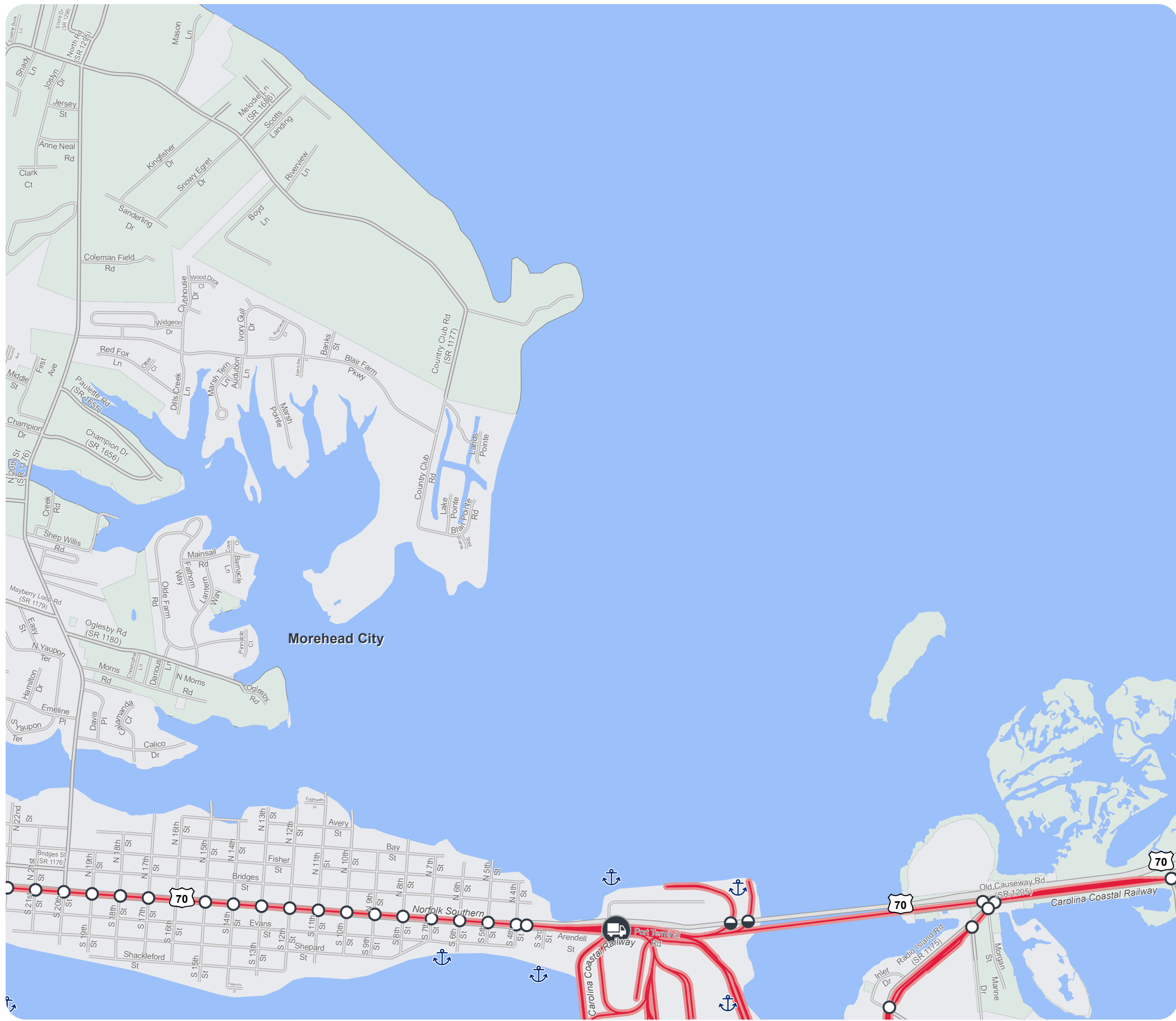
CTP Analysis and Information
 Inset 8
 Morehead City 3

Rail Features

- Fixed Guideway
- Amtrak / Freight Route
- Current Railroad
- Amtrak Station
- Intermodal Terminal

Rail Analysis Features

- Airport
- Seaport
- Destination
- Rail Crossing - At Grade
- Rail Crossing - Over
- Rail Crossing - Under
- Military Installation
- Study Road
- MPO Boundary
- RPO Boundary



Base map date: October 02, 2019

Legal Disclaimer

This product contains mapping data for informational and planning purposes only, and is subject to change. Users should review or consult the primary data sources to ascertain the usability of the information.

Plan Date: April 13, 2026

Figure 15
Rail Analysis



CARTERET COUNTY
 CTP Analysis and Information
 Inset 9
 Beaufort

Rail Features

- Fixed Guideway
- Amtrak / Freight Route
- Current Railroad
- Amtrak Station
- Intermodal Terminal

Rail Analysis Features

- Airport
- Seaport
- Destination
- Rail Crossing - At Grade
- Rail Crossing - Over
- Rail Crossing - Under
- Military Installation
- Study Road
- MPO Boundary
- RPO Boundary



Base map date: October 02, 2019

Legal Disclaimer

This product contains mapping data for informational and planning purposes only, and is subject to change. Users should review or consult the primary data sources to ascertain the usability of the information.

Plan Date: April 13, 2026

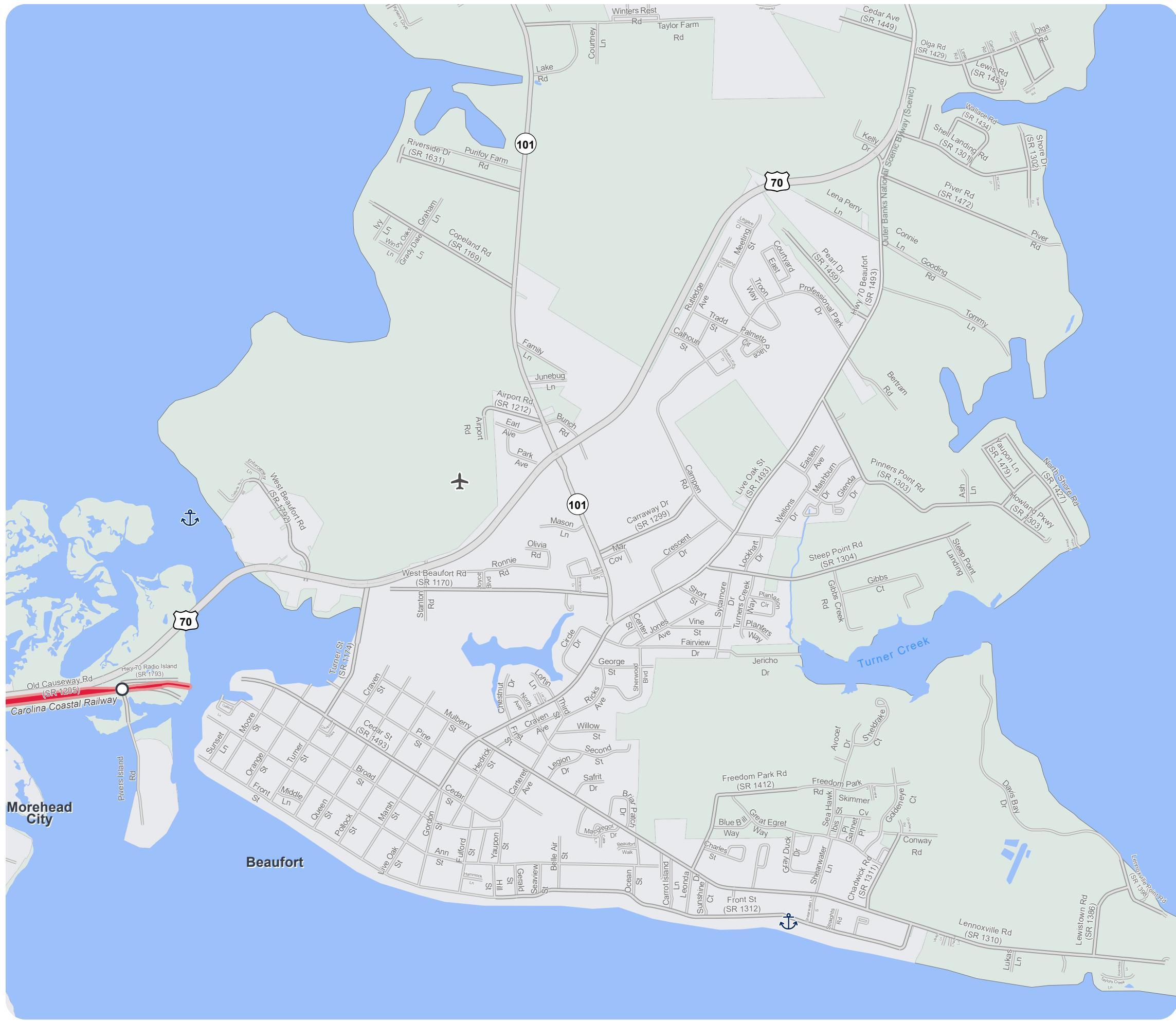


Figure 15
Rail Analysis



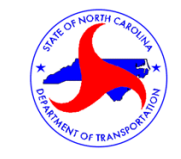
CARTERET COUNTY
 CTP Analysis and Information
 Inset 10
 Indian Beach

Rail Features

- Fixed Guideway
- Amtrak / Freight Route
- Current Railroad
- Amtrak Station
- Intermodal Terminal

Rail Analysis Features

- Airport
- Seaport
- Destination
- Rail Crossing - At Grade
- Rail Crossing - Over
- Rail Crossing - Under
- Military Installation
- Study Road
- MPO Boundary
- RPO Boundary



Base map date: October 02, 2019

Legal Disclaimer

This product contains mapping data for informational and planning purposes only, and is subject to change. Users should review or consult the primary data sources to ascertain the usability of the information.

Plan Date: April 13, 2026

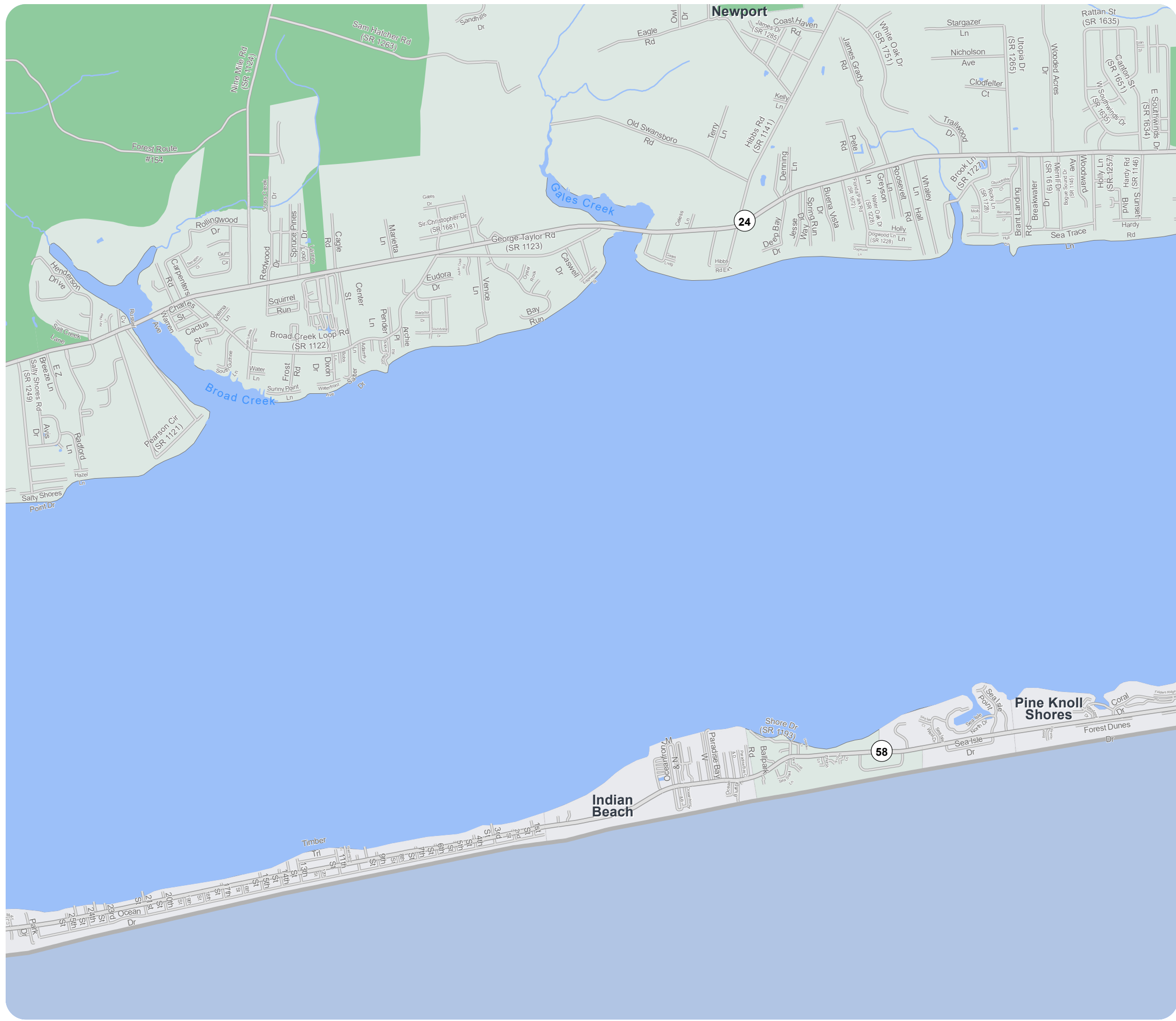




Figure 15
Rail Analysis



CARTERET COUNTY

CTP Analysis and Information
 Inset 11
 Pine Knoll Shores

Rail Features

- Fixed Guideway
- Amtrak / Freight Route
- Current Railroad
- Amtrak Station
- Intermodal Terminal

Rail Analysis Features

- Airport
- Seaport
- Destination
- Rail Crossing - At Grade
- Rail Crossing - Over
- Rail Crossing - Under
- Military Installation
- Study Road
- MPO Boundary
- RPO Boundary



Base map date: October 02, 2019

Legal Disclaimer

This product contains mapping data for informational and planning purposes only, and is subject to change. Users should review or consult the primary data sources to ascertain the usability of the information.

Plan Date: April 13, 2026

Figure 15
Rail Analysis



CARTERET COUNTY

CTP Analysis and Information
 Inset 12
 Atlantic Beach

Rail Features

- Fixed Guideway
- Amtrak / Freight Route
- Current Railroad
- Amtrak Station
- Intermodal Terminal

Rail Analysis Features

- Airport
- Seaport
- Destination
- Rail Crossing - At Grade
- Rail Crossing - Over
- Rail Crossing - Under
- Military Installation
- Study Road
- MPO Boundary
- RPO Boundary



Base map date: October 02, 2019

Legal Disclaimer

This product contains mapping data for informational and planning purposes only, and is subject to change. Users should review or consult the primary data sources to ascertain the usability of the information.

Plan Date: April 13, 2026